



360 REVIEWS



Sign In

When you use links on our website, we may earn a fee.

Home / 360 Reviews / Home Goods

6 Best Electric Toothbrushes of 2024

By [Lindsay Boyers](#)



Edited by [Marlo Jappen Porto](#)

Updated: Aug. 6, 2024



Save

Electric toothbrushes give manual options a run for their money. In fact, according to New York City-based dentist Michael Wei, DDS, using an electric toothbrush is much more effective than a regular toothbrush. “The electric toothbrush’s rotating bristles will clean your teeth better and are able to get in tight spaces that a manual one would not be able to,” he says.

Electric toothbrushes are also easier to use, and many people find them more enjoyable, too. To help you narrow down the options, we relied on research, our consumer survey, and the advice of three dental experts. The Oral B Pro 1000 Rechargeable Electric Toothbrush earns our top pick for the best electric toothbrush because it offers several advanced features and cleaning modes despite its affordable price tag. Our list features other options, as well, including one with smart technology, a travel-friendly model, and a toothbrush for those with sensitive teeth.

Table of Contents

[Best Electric Toothbrushes](#)

[Things To Consider When Buying](#)

[Electric vs. Manual Toothbrushes](#)

[More +](#)

Our Top Picks

Best Overall: [Oral B Pro 1000 Rechargeable Electric Toothbrush](#) »

[Jump to Review](#) ↓

Best Budget: [Quip Adult Electric Toothbrush »](#)[Jump to Review ↓](#)**Best for Travel:** [Mode Electric Toothbrush »](#)[Jump to Review ↓](#)**Best for Kids:** [Colgate Hum Kids Smart Battery Powered Toothbrush »](#)[Jump to Review ↓](#)**Best Smart:** [Oral B iO Series 10 Rechargeable Electric Toothbrush »](#)[Jump to Review ↓](#)**Best for Sensitive Teeth:** [Philips Sonicare 900 Series Power Toothbrush »](#)[Jump to Review ↓](#)**Best Overall****Oral B Pro 1000 Rechargeable Electric Toothbr...****PROS:****CONS:**

features, including
pressure sensors and
timers

brush heads

✗ Limited color options

- ✓ Three brushing modes
- ✓ Reasonably priced for the features it includes

Buy From Amazon

Oral B is one of the most highly regarded names in dentistry, and biomimetic dentist [Lauren Becker, DDS](#), says they make some of the best electric toothbrushes on the market. The brand has several lines of electric toothbrushes, but the Oral B Pro 1000 Rechargeable Electric Toothbrush is the best overall option on our list because of its features and value.

This toothbrush, which retails for just under \$50, is one of the lowest-priced models in Oral B’s lineup, though it’s packed with expert-recommended features that can help you brush better.

This is an oscillating toothbrush, which means it rotates and spins to remove plaque and clean teeth. It has three cleaning modes – Daily Clean, Whitening, and Sensitive – plus a pressure sensor that stops the oscillation if you push too hard. There’s also a two-minute timer that helps you brush for the recommended duration of time and a 30-second pulsating timer that alerts you when it’s time to switch quadrants.

This option includes the brush only, but the Oral B Pro 1000 is compatible with most of the brand’s brush heads (except ones in the iO series), so you can buy whichever replacement heads you prefer. This model is rechargeable and comes with a corded charging base.

Specs

List Price:	\$49.99
Brush Head Type:	Oscillating

Features: Pressure sensor, three brushing modes, two-minute timer, rechargeable battery, pulsing quadrant timer

Included Accessories: Brush and charging base

[Buy From Amazon »](#)

Best Budget

Quip Adult Electric Toothbrush »



PROS:

- ✓ Less expensive than other electric toothbrushes
- ✓ Option for a subscription for brush head refills
- ✓ Comes with mount/cover

CONS:

- ✗ Only one cleaning mode
- ✗ No pressure sensor

[Buy From Amazon](#)

The Quip Adult Electric Toothbrush is a budget-friendly model that costs about \$30 and is often on sale. This is a sonic toothbrush, which means it uses vibration to clean your teeth. According to [Alexander Vaiman, DDS](#), of New York Family Dental Arts, sonic toothbrushes work faster than oscillating toothbrushes (though they may be slightly less effective at plaque removal).

There's one mode, and the toothbrush has a three-month battery life – it operates on a AAA battery instead of a rechargeable one. This means you don't have to store it on a corded base. Instead, it comes with a brush holder that you can use to conveniently mount it to your mirror. This holder also doubles as a cover for travel.

Megan Wood, senior editor of Home Goods for U.S. News & World Report, was hesitant to switch her manual toothbrush for an electric one until she tried the Quip. "I immediately liked that it was battery powered, didn't take up bathroom counter space, and was easy to travel with," Woods says. She adds, "And, I could feel the difference after brushing. Now, I'm an electric toothbrush convert."

Michelle Barron, digital production and operations manager at U.S. News & World Report, is also a fan of this model, calling it "sleek" and "easy to transport." She particularly likes its timer function and how it doesn't need to be charged (though, she notes, this means you'll have to purchase replacement batteries).

The Quip is somewhat customizable. You can choose between plastic and metal handles – the metal will cost you about \$15 more – in eight colors. This gives it a more elevated look that can blend in with your bathroom aesthetic more than some of the other options on our list.

There are no brush refills included with your initial purchase, but you can sign up for a subscription to get one, two, or three new brush heads shipped to you every three months.

Specs

List Price:	\$30 (\$25 with brush head subscription)
Brush Head Type:	Sonic
Features:	Timed vibrations
Included Accessories:	Brush, one battery, travel cover that doubles as mirror mount

[Buy From Amazon »](#)

Best for Travel

Mode Electric Toothbrush »



PROS:	CONS:
✔ Lasts 30 days on a single charge	✗ Only one cleaning mode
✔ Wireless charging dock	✗ No advanced features

[Buy From Mode](#)

✓ Lifetime warranty with subscription

Mode’s wireless charging dock makes it an excellent option for travel and for keeping your counters clear. Instead of a bulky, corded charging base, Mode has a magnetic, wireless charging dock that lies flush against your outlet. This component features a built-in nightlight and can rotate to make room for other plug-in accessories, whether it be a phone charger or a hair dryer. The electric toothbrush also comes with a brush head cover so you can keep it protected and sanitary when you’re on the road.

It doesn’t have advanced features, but there’s an oscillating cleaning mode and its soft, tapered bristles are designed to get between the teeth. The battery is rechargeable, and the brush can last up to 30 days on a single charge, so you might not even have to worry about bringing the charger on shorter trips.

There are two color options to choose from – all white and all black – and the base is made of sleek, waterproof aluminum. While this toothbrush doesn’t come with extra brush heads, you can sign up for a recurring subscription to get refills delivered to you every three months. As long as you have an active subscription, you’ll be covered by a lifetime warranty. If your subscription lapses, the warranty drops to one year from the date of purchase.

Specs

List Price:	\$148 (\$130 with brush head subscription)
Brush Head Type:	Oscillating
Features:	Cordless charging base
Included Accessories:	Brush, charging base

[Buy From Mode »](#)

Best for Kids

Colgate Hum Kids Smart Battery Powered Toot...



PROS:

- ✓ Compatible app to encourage proper brushing
- ✓ Two-minute timer
- ✓ Smaller handles and brush head to accommodate kids

CONS:

- ✗ No integrated pressure sensor
- ✗ Not rechargeable

[Buy From Colgate](#)

Getting kids to brush their teeth can be a struggle; getting them to brush for the recommended two minutes can be even harder. Hum tried to solve this

problem by making brushing a little more fun with their Kids Smart Battery Powered Toothbrush.

This toothbrush connects to an app that uses augmented reality to track brushing progress via live games and it teaches kids where and how to brush effectively. (Note: You'll need a phone or tablet to connect to this app.) As your child brushes, they'll unlock new levels and experiences through the app that encourage them to keep up with proper hygiene techniques. You'll also get a two-minute timer through the app.

Outside of its smart capabilities, this electric toothbrush has a softer vibration for kids, an ergonomic grip designed for smaller hands, and a smaller brush head.

This toothbrush isn't rechargeable, but the starter kit includes the toothbrush, a connector for the augmented reality feature, a holder for your phone so your child can easily follow along with the app, one replacement brush head, and two AAA batteries. If you choose to sign up for the subscription option, you'll get a two-pack of brush heads sent to you at the frequency you select (for instance, every three months).

Specs

List Price:	\$34.99
Brush Head Type:	Sonic
Features:	Two-minute timer, app connectivity
Included Accessories:	Toothbrush, connector for augmented reality, phone holder, replacement brush head, two AAA batteries

[Buy From Colgate »](#)

Best Smart

Oral B iO Series 10 Rechargeable Electric Tooth...



PROS:

- ✓ Seven cleaning modes, including Super Sensitive
- ✓ Built-in pressure sensor
- ✓ Connects to app for brush habit tracking

CONS:

- ✗ Expensive
- ✗ Some say the app could be confusing

[Buy From Oral B](#)

The Oral B iO Series 10 is one of the most advanced electric toothbrushes on the market. For starters, it's fully Bluetooth-compatible and connects to the brand's app to track your brushing habits and make any recommendations for improvement. But, if you prefer to use your device app-free, you have that option, too.

The smart charger helps monitor your pressure, brushing time, and coverage area in real-time. There's a pressure sensor on the toothbrush itself that shows a red light when you're brushing too hard, or a green light when you're

using the right pressure. This makes it easy to adjust while you're looking in the mirror as you brush.

Additionally, there's an interactive color display that shows the current setting; there are seven total, including Daily Clean, Intense, Whiten, Sensitive, Super Sensitive, Gum Care, and Tongue Clean. The display also shows brushing time (there's a two-minute timer) and charging progress, and provides alerts for when it's time to change your brush head.

Isabel Roy, an associate editor at 360 Reviews, owns this toothbrush and appreciates its advanced features. "I have a really big issue with pressing down too hard on my toothbrush, but the pressure sensor has been a game changer for me! She adds, "It's also really helpful to have the timed buzzes throughout so I know when to move to a different section of my mouth."

While the toothbrush's charger itself is corded, the brush has a magnetic base that forms a solid connection, ensuring that it reaches a full charge in three hours.

The iO series 10 does have a higher price to match how feature-rich it is, but it comes with some extras too. The box includes four total brush head replacements and a charging travel case in addition to the regular charger and the toothbrush.

"My sister – a dentist – gifted me the toothbrush. It's her number 1 recommendation for patients!"

“ Isabel Roy, associate Editor, 360 Reviews for US News & World Report

Specs

List Price: \$379.99

Brush Head Type: Oscillating with micro-vibrations

Features:	Built-in timer, pressure sensor, seven cleaning modes, interactive color display
Included Accessories:	Toothbrush, two Ultimate Clean replacement brush heads, two Gentle Care replacement brush heads, smart charger, charging travel case

[Buy From Oral B »](#)

Best for Sensitive Teeth

Philips Sonicare 900 Series Power Toothbrush »



PROS:

- ✓ Pressure sensor
- ✓ Three intensities for daily cleaning mode
- ✓ Comes with travel case

CONS:

- ✗ Pricey
- ✗ Doesn't come with sensitive brush heads

[Buy From Phillips](#)

For those with sensitive teeth, Dr. Wei recommends a soft-bristled toothbrush with multiple speeds and settings that allow you to adjust the intensity. The Philips Sonicare 9000 Series Power Toothbrush fits the bill.

This toothbrush comes with four modes: clean, white+ (to help remove surface stains), gum health, and deep clean+. The clean mode is the regular daily cleaning setting, and you can set it to three intensities, low, medium, and high, depending on how sensitive your teeth are.

There’s a pressure sensor that alerts you when you’re brushing too hard – a nice option for those who may not feel the sensitivity right away, but get sore after applying too much pressure – and a two-minute timer that provides feedback by vibrating the handle when it’s time to switch quadrants and stop brushing.

This is a smart brush so there’s an option to connect it to a compatible app that tracks your brushing habits and provides reports to see how much you’ve improved over time.

This brush comes with one standard brush head, which may not be the best option for sensitive teeth, but if you want softer bristles, you can purchase sensitive brush heads that are 25% softer.

Specs

List Price:	\$199.96
Brush Head Type:	Sonic
Features:	Built-in timer, four brush modes, three intensities, pressure alerts
Included Accessories:	Brush, one brush head, travel case

[Buy From Phillips »](#)

The Bottom Line

Electric toothbrushes are better than manual ones, according to experts, and the best one for you will depend on your needs. We recommend the highly-rated Oral B Pro 1000 Rechargeable Electric Toothbrush for most people because it offers plenty of handy features for a reasonable price. However, we also covered other electric toothbrushes that can fit different needs – whether you want a smart electric toothbrush that tracks your brushing habits and alerts you to pressure changes in real-time, a compact model that you can bring with you on your travels, [an electric toothbrush that's designed with kids in mind](#), or one that's gentle enough for those with sensitive teeth.

Things To Consider When Buying Electric Toothbrushes

Sonic vs. Oscillating: There are two main types of electric toothbrushes: sonic and oscillating. Sonic toothbrushes use a vibrating motion to clean teeth while oscillating electric toothbrushes use a side-to-side motion. According to Dr. Wei, both types are effective, so the choice between them ultimately comes down to personal preference.

He says that sonic toothbrushes tend to be quieter and require less pressure when brushing. These can be a good option for those with sensitive gums or teeth. Sonic toothbrushes are faster, according to Dr. Vaiman, so they can clean teeth in less time, which is appealing for busier individuals.

On the flip side, oscillating toothbrushes aren't as gentle, but they tend to be more effective at removing plaque.

Dr. Wei recommends trying out both types to determine which is more comfortable and effective for your individual needs.

Special Features: Electric toothbrushes run the gamut, from very basic models to higher-priced options with lots of advanced features. This partly comes down to personal preferences, but experts recommend buying an electric toothbrush with at least some of the following features:

- **Two-minute Timer:** [Research shows](#) that the average person brushes their teeth for about 45 seconds, but most professionals recommend at least two minutes (twice per day) for best results. A two-minute timer can help ensure you brush your teeth for the recommended two minutes per session.
- **Pressure Sensors:** Dr. Wei recommends pressure sensors that can alert you when you're brushing too hard so you can adjust your brushing technique.
- **Interchangeable Heads:** Some days, your teeth may be more sensitive than others. Dr. Wei says many electric toothbrushes offer interchangeable heads so you can swap out the bristles for a more gentle brushing experience or one that's better suited for your teeth. Of the 100 consumers we surveyed, more than half of them listed brush head options as one of the five most important features when selecting an electric toothbrush.
- **Waterproof Design:** "Look for a toothbrush that's waterproof so you can use it in the shower or bath without any worry of damaging it," says Dr. Wei.
- **Different Brush Modes:** Dr. Vaiman recommends looking for an electric toothbrush with different brushing modes, like sensitivity, teeth whitening, and/or gum massage.
- **Replacement Reminder:** Dr. Vaiman says that most people don't replace their brush heads often enough, so a digital prompt that reminds you when it's time to swap it out can be an important feature.

Extra Accessories: Extra accessories are just a perk, but you might want to consider them when shopping for an electric toothbrush. Some brushes include just the handle and one brush head, but you have to buy any additional accessories separately.

Some models come with several accessories like extra brush heads, a charging travel case, or a smart charger. Granted, the price for these electric toothbrushes tends to be considerably higher than models without these perks.

In most cases, you can purchase any accessories you want through the company's website or on third-party sites like Amazon; you'll just have to consider the overall cost of buying them in one package versus buying what you want separately.

On a related note, many companies offer subscriptions for brush head replacements that can help you save some money. So, even if the brush doesn't come with these extras, you can still save over time by subscribing.

Battery Life and Charging Options: More than 70% of the consumers we've surveyed considered battery life to be one of the top five most important factors when choosing an electric toothbrush. Typically, you'll have two battery options: a rechargeable battery or replaceable batteries. Dr. Wei recommends a rechargeable battery so you don't have to worry about running out of power, but this mostly comes down to personal preference.

Most rechargeable electric toothbrushes last anywhere from two weeks to 30 days, depending on how you use them. However, some that require replacement batteries can last up to 30 days with one set of batteries.

Electric toothbrushes have different charging options available. Most have a corded charging base, but others are cordless so you don't have to worry about wires hanging around your sink. These cordless options can be desirable for those with limited counter space.

Electric vs. Manual Toothbrushes

Are electric toothbrushes better than manual toothbrushes? In a word: Yes. Electric toothbrushes are more efficient at removing plaque than manual toothbrushes, and the brush head motion dislodges plaque better than a manual toothbrush, according to Dr. Becker. Similarly, Dr. Vaiman shares that it's impossible to replicate the motion of an electric toothbrush with a manual brush, and electric brushes can get into tighter spaces.

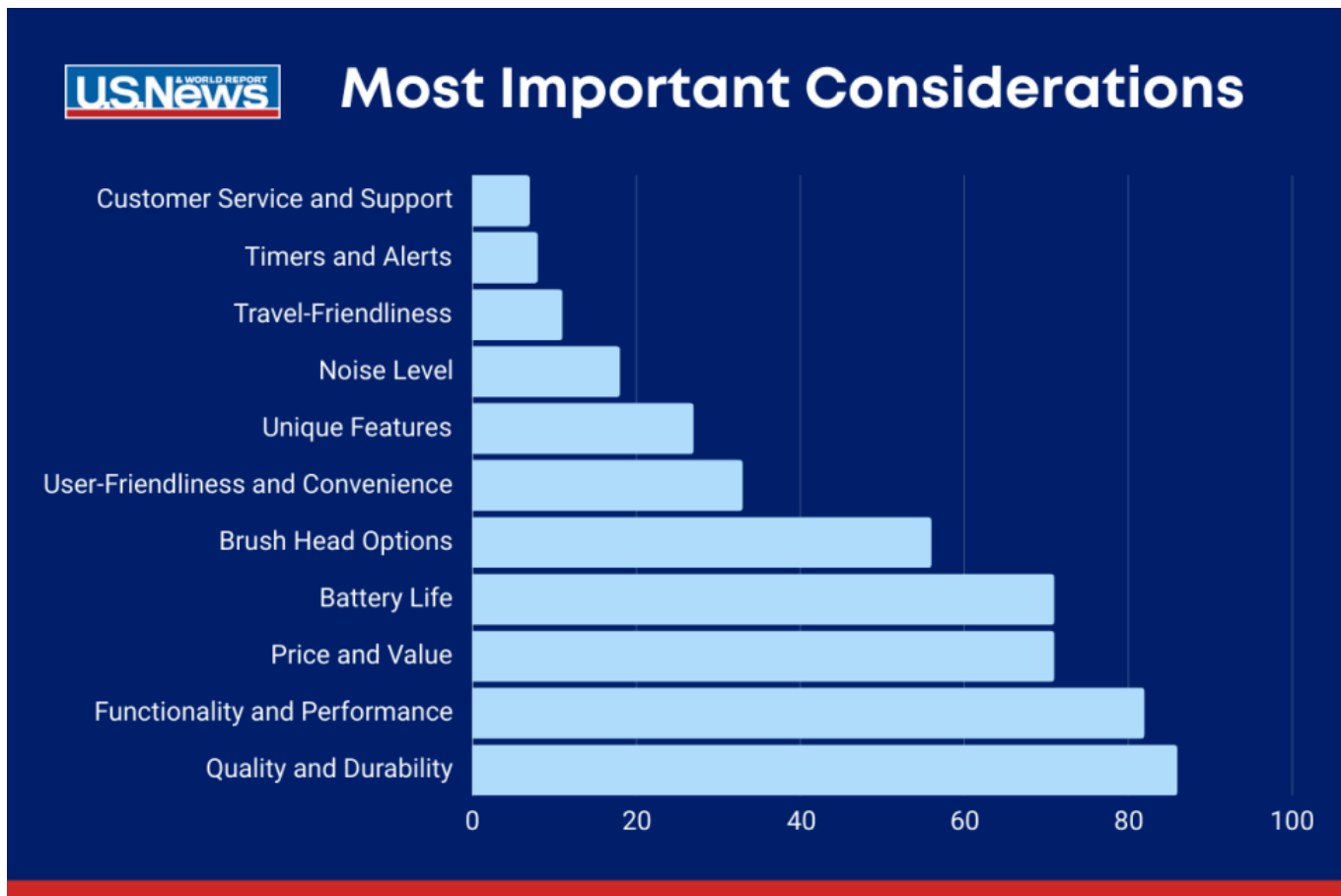
Let's face it: Brushing your teeth is a chore. Electric toothbrushes automate the process for you, making it less of a drag. Plus, many models come with helpful

features like timers to ensure that you're brushing for the recommended two minutes and sensors to alert you if you're brushing too hard or if it's time to switch quadrants.

Manual toothbrushes have their perks, too. They're cheaper than their electric counterparts, and more likely to be found at a store if you're in a pinch. Manual toothbrushes don't require batteries or charging. They're not noisy to use like electric toothbrushes, meaning you don't have to worry about late-night or early-morning brushings bothering your household. Not everyone wants the bells and whistles of electric toothbrushes. Ultimately, the best kind of toothbrush is one that you'll use.

Our Survey Results

We surveyed 100 people about what's most important to them when shopping for electric toothbrushes. The top five most important factors according to those surveyed are quality and durability (86% of respondents), functionality and performance (82%), price and value (71%), battery life (71%), and user-friendliness and convenience (33%). Generally, we found that shoppers weren't as interested in advanced features like timers and alerts (only 8% of respondents noted these as a top consideration) as they were with the quality and performance of the electric toothbrush.



How We Chose the Best Electric Toothbrushes

Oral care is extremely important, not just for your teeth and gums, but for your overall health, too. Because of this, we don't take these recommendations lightly. To put together this list of the best electric toothbrushes, we conducted research and a consumer survey in addition to consulting with three dental professionals: New York City-based dentist [Michael Wei, DDS](#), biomimetic dentist [Lauren Becker, DDS](#), and [Alexander Vaiman, DDS](#), a dentist from New York Family Dental Arts.

We asked them questions about the different types of electric toothbrushes and how to choose between them. We also asked about recommended features. We then used their answers to narrow down the choices through extensive research, considering features, prices, extra accessories, and battery life. Overall, we found that it doesn't matter whether you get an oscillating or a sonic electric toothbrush, as long as you're using it for the recommended two minutes per session, twice a day.

WHY SHOULD YOU TRUST US?

At 360 Reviews, our contributors and editors have years of experience researching, testing, and reviewing products. [Lindsay Boyers](#), the author of this piece, has about five years of product reviewing experience with a heavy focus on health-related items. For U.S. News, she has covered [meal prep containers](#) and [compression leggings](#), among other topics.

Boyers has also written for several health-focused publications, including Healthline, mindbodygreen, Livestrong, and Verywell Health. In addition to leaning on her own experience, Boyers consulted with three dental experts to write this piece. She, and one of the experts, both use an Oral B iO Series electric toothbrush every day. [Marlo Jappen Porto](#), who edited this piece, is an editor at 360 Reviews, specializing in fitness and sleep.

FAQ

How often should I change the brush head on my electric toothbrush?



Where should I store my electric toothbrush?



What type of electric toothbrush is best for those with sensitive teeth or gums?



About Our Team

Lindsay Boyers

Contributor

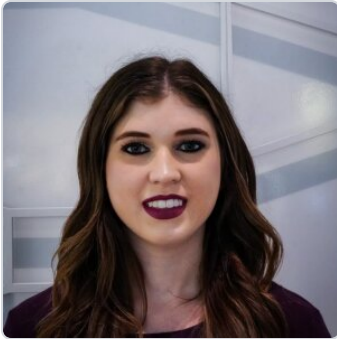


Lindsay Boyers is a certified nutritionist and freelance writer and editor with extensive experience in sleep and other areas of



health and wellness. She has personally tested over four dozen mattresses and many other sleep products, like pillows, sheets, and weighted blankets. Her work has been featured in Forbes, CNET, CNN Underscored, The Spruce, and Healthline, among

[Read more](#)



Marlo Jappen Porto

Former Editor



Marlo Jappen Porto is a former editor for U.S. News 360 Reviews, focusing on home goods. Prior to joining the team, she was a researcher at NBCUniversal, where she gathered compelling and relevant archival content for live broadcasts. In addition, she has spent years working as an editor and community journalist.

[Read more](#)

U.S. News 360 Reviews takes an unbiased approach to our recommendations. When you use our links to buy products, we may earn a commission but that in no way affects our editorial independence.

HOME

HOME SERVICES

SLEEP

TECHNOLOGY

LIFESTYLE

INSURANCE

BUSINESS

360 REVIEWS UK



[About](#) [Editorial Guidelines](#) [Contact](#) [Press](#) [Advertise](#) [Newsletters](#) [Jobs](#) [Site Map](#)
[Store](#)

