



360 REVIEWS



Sign In

When you use links on our website, we may earn a fee.

[Home](#) / [360 Reviews](#) / [Sleep](#) / [Mattresses](#)

The 4 Best Soft Mattresses of 2024

By [Lauren Allain](#)



Edited by [Marlo Jappen Porto](#)

Updated: July 30, 2024



Save

Some sleepers sleep best on a soft, cushiony mattress. Side sleepers, lightweight people, and those who prefer a body-contouring feel often prefer a soft mattress. Kevin Lees, the director of chiropractic operations at The Joint Chiropractic, says, "Side sleepers tend to experience pressure on their shoulders and hips, which can create pain points or pressure points if the mattress they are using is very firm." Opting instead for a soft mattress can help with pressure relief.

The Bear Elite Hybrid, which we [tested in our lab](#), is our best overall soft mattress. It comes in three levels of firmness, including Soft. We found it to be supportive in all positions and it was easy for our testers to change positions while lying on this mattress. In addition to the Bear Elite Hybrid, our list also covers options for hot sleepers, couples, and heavier-weight sleepers.

Table of Contents

[Best Soft Mattresses](#)

[Who Is a Soft Mattress Best For?](#)

[How We Chose](#)

[More +](#)

Our Top Picks

Best Overall: [Bear Elite Hybrid - Soft Version](#) »

[Jump to Review](#) ↓

Best Cooling: [Saatva Classic - Plush Soft Version](#) »

[Jump to Review ↓](#)**Best for Couples:** [Layla Hybrid - Soft Side »](#)[Jump to Review ↓](#)**Best for Heavy Sleepers:** [The WinkBed - Softer Version »](#)[Jump to Review ↓](#)

Best Overall

Bear Elite Hybrid - Soft Version »

4.2 ★★★★★☆ U.S. News Rating



PROS:

- ✓ Soft hybrid rated as a 5 out of 10 on the firmness scale
- ✓ Antimicrobial foam infused with copper

CONS:

- ✗ Motion isolation isn't the best
- ✗ Pricey

[Buy From Bear](#)

 Reinforced edge support

If you sleep best on a soft mattress, the Bear Elite Hybrid is a solid soft choice. The mattress comes in three levels of firmness, including a Soft option which Bear ranks as a 5 out of 10 on the 1-10 firmness scale, with 10 being the firmest. We tested the Medium version in our lab, which Bear rates as a 6 out of 10. Overall, we found it to be true to its name, giving a medium feel. Our tester Melinda Yeaman, who is 5 feet, 7 inches tall, and 165 pounds said, “Good support with a very soft feel. Great cuddly feel.”

The Bear Hybrid measures 14 inches tall and includes a supportive coil layer that’s separated into zones to offer more support in the lumbar area. In testing, we felt the Bear Elite Hybrid offered good to excellent support in all sleeping positions. Our tester Catalina Arndt, who is 5 feet, 8 inches tall, and 146 pounds said, “This mattress has the right amount of hug factor on my body.”

However, if you’re an especially light sleeper, the Bear Elite Hybrid might prove disruptive when sharing the bed with a partner. We found the bed lacked strong motion isolation and our 5-foot 7-inch tester Craig Hanks, who weighs 200 pounds, said, “Decent amount of distracting bounce when a partner got in and out or shifted positions.”

Specs

List Price (Queen):	\$2,305
Mattress Type:	Hybrid
Sleep Trial:	120 nights
Warranty:	Lifetime

[Buy From Bear »](#)

Best Cooling

Saatva Classic - Plush Soft Version »

3.9 ★★★★★ ☆ U.S. News Rating



PROS:

- ✓ Plush Soft version relieves pressure with additional upper padding
- ✓ Two height options available
- ✓ Includes free white-glove delivery

CONS:

- ✗ Taller version isn't compatible with adjustable bases
- ✗ Returns cost \$99

**U.S. News
Exclusive Deal**

Exclusive USN
Labor Day Sale:
Get \$400 OFF
Orders \$1000+

[Buy From Saatva](#)

If you're a hot sleeper looking for a soft mattress, check out the Saatva Classic mattress. This mattress is offered in three different levels of

firmness, the softest being the Plush Soft option that’s made with softer foam compared to the other two firmness options. Saatva designed the Plush Soft option to give a body-contouring feel. It rates at a 3 out of 10 on the firmness scale, according to the company.

The Saatva Classic is made with an inherently breathable design. Below the comfort layers sit two coil layers that allow for air to naturally move in and out of the mattress. Hot sleepers could find these features help them to sleep cooler than some other mattress types, such as an all-foam bed. We tested the Luxury Firm version of the Saatva Classic in our lab and the majority of our panel was impressed with its edge support. For instance, tester Lincoln Bailey who is 5 feet, 11 inches tall and 160 pounds said, “The edge support is really nice and makes it easy to get on and off the mattress.”

This mattress is on the price side, costing more than \$2,000 for a queen size. However, Saatva offers a 365-night sleep trial, one of the longest trials of our top picks. The bed also comes with a lifetime warranty. Saatva offers free delivery and in-home setup. Your mattress will arrive uncompressed (not a [bed-in-a-box](#)), and the delivery team sets up the mattress in the room of your choice.

Read more in our full [Saatva Classic mattress review](#).

Specs

List Price (Queen):	\$2,095
Mattress Type:	Innerspring
Sleep Trial:	365 nights
Warranty:	Lifetime

[Buy From Saatva »](#)

Best for Couples

Layla Hybrid - Soft Side »



The Layla Hybrid is a flippable mattress that's firm on one side and soft on the other.

PROS:

- ✓ Flippable design with two levels of firmness, including Soft
- ✓ Removable cover makes cleaning easier
- ✓ Cooling copper-infused foam is antimicrobial

CONS:

- ✗ Short warranty
- ✗ Could feel too bouncy for some

Exclusive U.S.
News Offer:
\$210 OFF + 2
FREE Pillows
(code: USNEWS)

[Buy From Layla](#)

Couples looking for a mattress that offers a soft level of firmness and motion isolation could find a great night's sleep on the [Layla Hybrid](#). Sharing a mattress with a partner or pets can sometimes lead to unwanted waking

when others move the mattress, and the Layla Hybrid addresses this issue with layers designed to absorb motion.

Five layers make up this unique hybrid that offers two levels of firmness: one side is soft and the other is firm so that you can flip the mattress for two different feels. The soft side is made with a layer of copper-infused memory foam for those who like a hug feeling from the mattress. The copper infusion is meant to assist with keeping the mattress cool while offering antimicrobial odor control.

Costing roughly \$1,700 for a queen size, the Layla Hybrid is the least expensive option on our list of the best soft mattresses. This bed-in-a-box comes with a 120-night at-home sleep trial.

Read more in our full [Layla Hybrid mattress review](#).

Specs

List Price (Queen):	\$1,699
Mattress Type:	Hybrid
Sleep Trial:	120 nights
Warranty:	10 years

[Buy From Layla »](#)

Best for Heavy Sleepers

The WinkBed - Softer Version »

4.0 ★★★★★ U.S. News Rating



The WinkBed Mattress

PROS:

- ✓ Added pressure-relieving foam
- ✓ Zoned coil support for extra support in the lumbar area
- ✓ Softer version is made with a three-layered pillowtop

CONS:

- ✗ Sleeps closer to temperature neutral instead of cooling
- ✗ Firmness exchanges cost \$49

[Buy From WinkBeds](#)

Heavier Sleepers who like the feel and support of a softer mattress could find comfort with [The WinkBed](#). The mattress comes in three firmness options, including a softer version that the company rates as a 4.5 out of 10 on the mattress firmness scale. The softer version of The WinkBed has a quilted Euro top with three layers of foam just underneath. Below is a layer of individually pocketed coils for support. We tested the Luxury Firm version of the WinkBed in our lab and many of our testers were impressed with the

bed’s support in all sleeping positions. Tester Hanks said, “Loving the combination of the very firm base and the soft, well-proportioned topper. Lovely in every position.”

The WinkBed is also made with reinforced edge support that could be great for [heavier sleepers](#) who have trouble getting in and out of bed. Our tester Huston Evans, who is 5 feet, 11 inches tall, and 200 pounds, said, “The sides sink a tiny bit, but it’s very manageable.”

Heavier Sleepers

The WinkBed is a bed-in-a-box that ships compressed and rolled. While it’s around \$1,800 for a queen, it does come with a lifetime warranty and a 120-night sleep trial.

Read more in our full [The WinkBed mattress review](#).

Specs

List Price (Queen):	\$1,799
Mattress Type:	Hybrid
Sleep Trial:	120 nights
Warranty:	Lifetime

[Buy From WinkBeds »](#)

The Bottom Line

A soft mattress can be ideal for sleepers who love the feel of pressure-relieving, cushioned comfort. Side sleepers, lightweight people, and anyone who likes a contouring feel might prefer a soft mattress. Rather than giving the feel of sleeping

on top of the mattress, most soft beds provide a sinking-in feel that contours to the body.

If you're shopping for a soft mattress, we found the Bear Elite Hybrid to be an easy option. The mattress uses several layers of pressure-relieving foam above a zoned coil layer that gives extra support in the lumbar area. The 14-inch mattress is also fiberglass-free. In testing, we were impressed with the overall comfort of the Bear Elite Hybrid for all sleeping positions and we also found it was easy to move around on, making it suitable for sleepers who toss and turn.

Who Is a Soft Mattress Best For?

A soft mattress is best for:

- ✓ Sleepers who like a mattress with a cloudlike level of softness
- ✓ Side sleepers who need extra pressure relief

Cons:

- Sleepers who deal with back pain
- Back and stomach sleepers that feel best supported on a firmer bed

Soft mattresses can be a great fit for some sleepers including lightweight sleepers and side sleepers looking for pressure relief. A soft mattress provides a plush feel in the upper comfort layers while still providing support with the core of the mattress to keep the spine in ideal alignment throughout the night. Soft mattresses can come in many types including all-foam, hybrid mattresses, and innerspring beds. You'll also be able to find a soft mattress in a wide range of sizes from twin through California king.

If you're not sure if a soft mattress is the best fit for you, you may be interested in a flippable model that has two firmness options in one mattress, like the [Layla Hybrid](#) and Layla Memory Foam Mattress. Both of these offer one side that ranks soft on the firmness scale and one that ranks firm. This option leaves you with two choices should your preferences change over time.

Depending on your preferences, a soft mattress can help keep motion transfer to a minimum, which could be great for couples. Hot sleepers should look for a soft mattress with [cooling features](#) like gel or copper-infused foam to help move any excess heat away from the body

How We Chose the Best Soft Mattresses

The 360 Lab tested dozens of [mattresses](#), including some of the ones that make this list, to measure how they perform in terms of comfort, feel, motion isolation, cooling, and more. We also conducted a detailed consumer survey to get real-life feedback from sleepers. Additionally, we consulted with Kevin Lees, the director of chiropractic operations at [The Joint Chiropractic](#), a chiropractic clinic based in Scottsdale, Arizona. Lastly, we looked into company policies like the at-home sleep trial and warranty, as well as brand reputation to make sure the company has favorable customer service.

WHY SHOULD YOU TRUST US?

Our contributors and editors have years of experience researching, testing, and reviewing products. The author of this piece, [Lauren Allain](#), has more than six years of experience with testing and reviewing sleep products with an emphasis on mattresses and sheets. [Marlo Jappen Porto](#), U.S. News 360 Reviews editor, is an experienced commerce editor, focusing on sleep and fitness products

FAQ

What is a soft mattress?



How much does a soft mattress cost?



What is the best soft mattress?



How long does a soft mattress last?



Can you make a firm mattress softer?



About Our Team



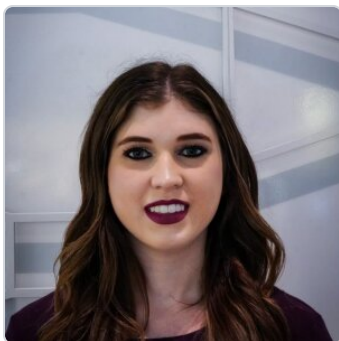
Lauren Allain

Contributor



Lauren Allain is a contributing writer for U.S. News 360 Reviews where she covers sleep products and other home goods. She's a trained journalist with expertise in sleep health, fitness, and wellness. In addition to 360 Reviews, her sleep-product writing has appeared in Homes & Gardens, INSIDER, tuck.com, Mattress Firm, and sleep.com.

[Read more](#)



Marlo Jappen Porto

Former Editor



Marlo Jappen Porto is a former editor for U.S. News 360 Reviews, focusing on home goods. Prior to joining the team, she was a researcher at NBCUniversal, where she gathered compelling and relevant archival content for live broadcasts. In addition, she has spent years working as an editor and community journalist.

[Read more](#)

HOMEHOME SERVICESLEEPTECHNOLOGY

LIFESTYLEINSURANCEBUSINESS360 REVIEWS UK



About Editorial Guidelines Contact Press Advertise Newsletters Jobs Site Map

Store

Copyright 2024 © U.S. News & World Report L.P.

Terms & Conditions/Privacy Policy/U.S. State Privacy Notice/Your Privacy Choices 