



360 REVIEWS



Sign In

When you use links on our website, we may earn a fee.

Home / 360 Reviews / Pets

## Best Dog Doors of 2024

By [Deirdre Mundorf](#)



Edited by [Kayla Randolph](#) and [Marlo Jappen Porto](#)

Updated: May 22, 2024



Save

Many pet parents install dog doors to give their canine companions the ability to let themselves in and out of the home. Regardless of whether these pet doors are purchased out of necessity – if you'll be away for extended periods – or simply because of the convenience they offer, choosing a quality product that matches your budget, the size of your dog, and any climate-related constraints of the area where you live is important.

We've rounded up the best options like the BarksBar Large Plastic Dog Door, our best overall pick. With its telescoping design that works with doors of varying thickness, impact-resistant frame, magnetic closure to reduce energy loss, and large opening that accommodates dogs up to 100 pounds, this is one of the best dog doors and is likely to be a top contender for many shoppers.

### Table of Contents

[Best Dog Doors](#)

[Things To Consider When Buying](#)

[How We Chose](#)

[More +](#)

## Our Top Picks

**Best Overall:** [BarksBar Large Plastic Dog Door](#) »

[Jump to Review](#) ↓

**Best Budget:** [Trixie Pet Products Two-Way Dog Flap](#) »

[Jump to Review](#) ↓

**Best for Small Breeds:** [Baboni Pet Door for Wall](#) »

[Jump to Review](#) ↓

**Best for Large Breeds:** [Mavric Locking Dog Door](#) »

[Jump to Review](#) ↓

**Best Electronic:** [Sure Petcare SureFlap Microchip Pet Door](#) »

[Jump to Review](#) ↓

**Best for Sliding Doors:** [PetSafe Sliding Glass Pet Door](#) »

[Jump to Review](#) ↓

**Best Insulated:** [PetSafe Extreme Weather Pet Door](#) »

[Jump to Review](#) ↓

**Best Wall-Mounted:** [Ideal Pet Products Easy-To-Fit “Wall Entry” Pet Door](#) »

[Jump to Review](#) ↓

**Best Door-Mounted:** [Ideal Pet Products AirSeal Pet Door](#) »

[Jump to Review](#) ↓

**Most Stylish:** [PETOUCH Premium Dog Door](#) »

[Jump to Review](#) ↓

## Best Overall

**BarksBar Large Plastic Dog Door** »

**PROS:**

- ✓ Magnetic closure
- ✓ Telescoping frame for easy installation
- ✓ Locking sliding panel for security

**CONS:**

- ✗ Only one size option
- ✗ No microchip scanner

[Buy From Amazon](#)

The BarksBar Large Plastic Dog Door is easy to install, compatible with doors of varying thicknesses, and suitable for dogs up to 100 pounds. This model features a telescoping frame, allowing it to be adjusted for use with doors between 1 1/4 and 2 inches thick. The thermoplastic frame is impact-resistant for added durability and features a stylish aluminum lining.

Once installed, the flexible vinyl flap allows dogs to pass through the doorway easily. The magnetic closure helps keep the flap in place, preventing rain or wind from entering the home and decreasing energy loss. A self-locking sliding panel can be inserted into the frame whenever you want to prevent your pet from having free access to the outdoors or want to deny other animals or intruders access to your home.

Specs

List Price:	\$51.95
Door Type:	Door-mounted
Lock:	Yes
Flap Size(s):	10.5 in. W x 15 in. H

[Buy From Amazon »](#)

Best Budget

**Trixie Pet Products Two-Way Dog Flap »**



PROS:

- ✓ Inexpensive
- ✓ Locking metal panel

CONS:

- ✗ Not suitable for large dogs

[Buy From Amazon](#)

-  Extendible
-  Only one flap

If you're on a tight budget, you might want to look into the Two-Way Dog Flap from Trixie Pet Products, which costs less than \$30 for the Small - Medium size. This dog door has a tunnel element that makes it so it can extend between 0.75 and 1.25 inches for sizes Extra Small - Small and Small - Medium. (It extends between 0.5 and 1.25 inches in Medium - Extra Large.) An additional extension piece is available for thicker doors at an extra cost. The door has a plastic frame with a transparent door flap engineered for quiet operation. If desired, you can insert a metal panel on the interior side of the door to lock it.

### Specs

List Price:	\$27.99 (Small - Medium) to \$45.50 (Extra Small - Small)		
Door Type:	Door-mounted		
Lock:	Yes		
Flap Size(s):	7.87 in. W x 8.27 in. H (Extra Small - Small) to 15.35 in. W x 17.72 in. H (Medium - Extra Large)		

[Buy From Amazon »](#)

### Best for Small Breeds

### Baboni Pet Door for Wall »

**PROS:**

- ✓ Relatively affordable for small size
- ✓ Slide-in panel to restrict access and protect against elements
- ✓ Magnetic closure

**CONS:**

- ✗ Only two flaps
- ✗ No microchip scanner

[Buy From Amazon](#)

The Baboni Pet Door is ideal for Shih Tzus, bichons frisés, Chihuahuas, and other small breeds. The small door is designed for dogs or [cats](#) weighing up to 12 pounds, while the medium door will be a better option for dogs weighing between 12 and 40 pounds. There are also two additional sizes to accommodate dogs weighing up to 220 pounds.

This dog door is designed to be installed in the wall (either interior or exterior) using the included template and detailed instructions. Once installed, pets can freely enter or exit the home as desired, and the double-flap design works to prevent drafts and maintain energy efficiency. It also

has a slide-in panel that you can close when you wish to restrict your pet’s access or add a layer of security to the home to keep out unwanted guests.

Specs

List Price: \$81.99 (Small) to \$309.99 (X-Large)

Door Type: Wall-mounted

Lock: Yes

Flap Size(s): 5 1/4 in. W x 8 1/8 in. H (Small) to 13 19/64 in. W x 23 19/32 in. H (X-Large)

[Buy From Amazon »](#)

Best for Large Breeds

Mavric Locking Dog Door »



PROS:

CONS:

accommodates dogs up to 220 pounds

complained the flaps wore out too quickly

✔ Durable aluminum construction

✗ Not very budget-friendly

Buy From Amazon

✔ Magnetic closure helps keep flaps secure

Designed for dogs weighing up to 220 pounds, the X-large size of the Mavric Locking Dog Door can accommodate large breeds, such as Great Danes and German Shepherds. The door is also available in medium and large sizes for dogs who weigh up to 40 and 100 pounds respectively. This door is designed with energy efficiency in mind, with its dual flaps and secure magnetic closure. You can also slide down the durable “Aerometal” panel as needed to keep out the elements or prevent your dog from accessing the door. Another feature of this model is the integrated dust strip. Not only does the strip help remove loose debris from a dog’s feet as they walk in, but it also helps ensure that the flaps operate quietly, minimizing any disruption to the other members of your household.

Specs

List Price: \$139.95 (Medium) to \$168.99 (X-Large)

Door Type: Door-mounted

Lock: Yes

Flap Size(s): 8 3/5 in. W x 12 7/8 in. H (Medium) to 14.1 in. W x 23.6 in. H (X-Large)

Buy From Amazon »

Best Electronic



## Sure Petcare SureFlap Microchip Pet Door »



### PROS:

- ✓ Scanner to control entry
- ✓ Can lock or unlock using app
- ✓ App allows for monitoring of pet usage and behaviors

### CONS:

- ✗ Expensive
- ✗ Only suitable for small dogs and cats

[Buy From Amazon](#)

The Sure Petcare SureFlap Microchip Pet Door features sensors that let you control entry. Pair the sensor with your pet's [microchip](#), and the door will automatically open when they're nearby. If your dog isn't microchipped, Sure Petcare sells radio frequency identification (RFID) tags that you can attach to your pet's [collar](#).

Once connected with the Hub, which is sold separately for \$84, you can use your [smartphone](#) to view data and manage it. With the Sure Petcare App, you

can lock or unlock the door from wherever you are, receive alerts about door usage, set curfew times when the door will automatically lock, and even track your dog’s behaviors (such as when they go out or how long they stay outside). Unfortunately, if you have a medium or large dog, this electronic door won’t work, as it’s designed for only small dogs and cats.

Specs

List Price:	\$200
Door Type:	Electronic door-mounted
Lock:	Yes
Flap Size(s):	6 11/16 in. W x 7 in. H

[Buy From Amazon »](#)

Best for Sliding Doors

PetSafe Sliding Glass Pet Door »



**PROS:**

- ✓ Can be installed without cutting into a wall or door
- ✓ Comes in three sizes
- ✓ Magnetic closure

**CONS:**

- ✗ May need to add weatherstripping for more insulation
- ✗ Somewhat pricey

[Buy From Amazon](#)

The PetSafe Sliding Glass Pet Door installs without the need to cut or [drill](#) into your doors or walls, making it a good option for those renting a home or anyone looking for a temporary solution. Simply follow the directions to line up the dog door with the track of your [sliding glass door](#), and then use the latch kit (included with each purchase) to secure your sliding glass door. After the dog door is installed, the sliding door will still be usable.

Available in three sizes, this door is suitable for small and large dogs. It's constructed from weather-resistant aluminum and tempered glass for lasting durability. The flap has a magnetic closure to minimize energy loss and prevent rainwater from entering the home. There's also a closing panel that users can slide over the interior to block the pet's access to the door or provide an additional layer of security at night or when away from home.

Specs

List Price:	\$279.99 (Medium) to \$304.99 (Large-Tall)
Door Type:	Sliding door
Lock:	Yes
Flap Size(s):	8 1/4 in. W x 13 3/16 in. H (Medium) to 10 1/4 in. W x 16 3/8 in. H (Large-Tall)

[Buy From Amazon »](#)

Best Insulated

**PetSafe Extreme Weather Pet Door »**

**PROS:**

- ✓ Uses three flaps for improved insulation
- ✓ Snap-on panel to control access to door
- ✓ Four sizes

**CONS:**

- ✗ Wind may blow magnetic closure open
- ✗ No lock

[Buy From Amazon](#)

If you're worried about a dog door letting cold drafts in during the winter or allowing cool air to escape in the summer, then the PetSafe Extreme Weather Pet Door might be for you. Unlike most models with one or maybe two flaps, this door uses a three-flap design to help maintain the home's temperature settings. With the center insulated flap, the energy loss is decreased, and you won't need to worry as much about cold drafts.

The door is available in four sizes to accommodate dogs weighing up to 100 pounds. It's adjustable for use in doors between 1 5/8 and 2 1/4 inches thick. You can even paint the plastic frame to coordinate with your existing door. Plus, a snap-on panel is included with each purchase to give you control over when your pet can access the door.

## Specs

**List Price:** \$64.99 (Small, Plastic) to \$224.95 (X-Large, Aluminum)

**Door Type:** Door-mounted

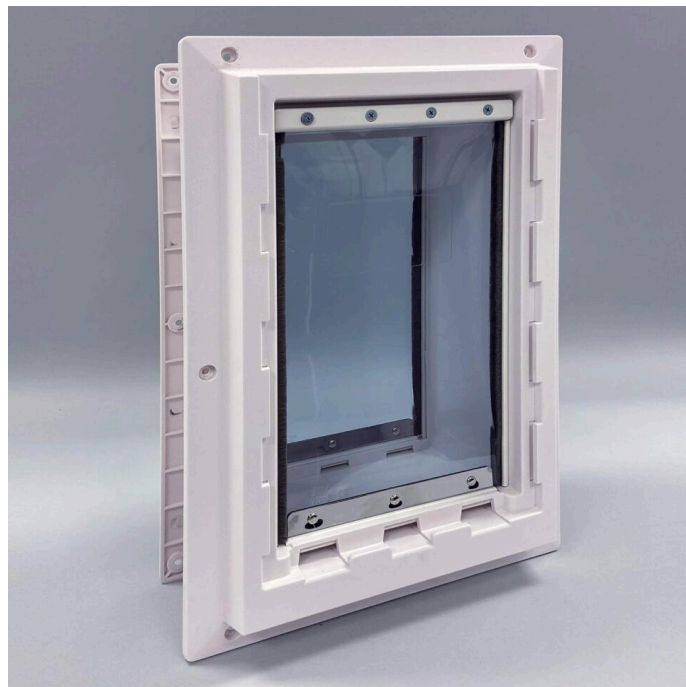
**Lock:** No

**Flap Size(s):** 5 1/8 in. W x 8 7/8 in. H (Small) to 13 3/4 in. W x 23 3/4 in. H (X-Large)

[Buy From Amazon »](#)

### Best Wall-Mounted

## Ideal Pet Products Easy-To-Fit “Wall Entry” Pet...



### PROS:

✓ Can be installed in walls

### CONS:

✗ Not very budget-friendly

made of many different materials

✗ No smart features

Buy From Amazon

- ✓ Comes with an “animal lock-out slide”
- ✓ Extends to different depths

If installing a dog door in one of your home’s exterior doors isn’t possible or is something you’d prefer not to do, then the Ideal Pet Products Easy-To-Fit “Wall Entry” Pet Door might appeal to you. This product can be installed directly into the wall and works with various materials, including drywall, wood, plastic, siding, brick, stucco, and concrete. It’s compatible with walls between 4 1/4 and 9 1/4 inches thick.

The vinyl flaps are designed for enhanced energy efficiency. They work to form an “airlock” to prevent cold drafts from coming in and warm air from escaping. The door is sold in medium and large sizes, suitable for dogs weighing between 13 and 90 pounds. A “lock-out slide” is also included with each purchase. If you want to try to install this device yourself, the included kit contains a template and all the necessary hardware.

Specs

List Price:	\$139 (Medium) to \$165 (Extra Large)
Door Type:	Wall-mounted
Lock:	Yes
Flap Size(s):	7 1/4 in. W x 13 in. H (Medium) to 9 3/4 in. W x 17 in. H (Extra Large)

Buy From Amazon »

## Best Door-Mounted

### Ideal Pet Products AirSeal Pet Door »



#### PROS:

- ✓ Telescopes to work with doors of varying thicknesses
- ✓ Kit includes everything needed for installation
- ✓ Air gap helps increase energy efficiency

#### CONS:

- ✗ No scanner to keep unwanted animals out
- ✗ Only suitable for dogs less than 90 pounds

[Buy From Amazon](#)

The Ideal Pet Products AirSeal Pet Door features a telescoping frame, allowing it to be installed into standard doors with a thickness between 1 1/4 and 1 3/4 inches. Each purchase includes all the necessary hardware, so you won't need to purchase any additional items to get it all set up for your pup. The door can be used with dogs weighing between 2 and 90 pounds, with small, medium, and large options.



Instead of the standard flaps you'll find with many other pet doors, this model has dual-pane Lexan hard panels. The panes are designed with energy efficiency in mind, as they feature a special air gap between them to minimize energy loss. This dog door also offers a spring-loaded locking slide to let owners control when their pet is allowed outdoors and to deny other creatures access to the home.

Specs

List Price:	\$49.95 (Small) to \$78.86 (Large)
Door Type:	Door-mounted
Lock:	Yes
Flap Size(s):	6 5/8 in. W x 9 7/8 in. H (Small) to 12 in. W x 17 1/2 in. H (Large)

[Buy From Amazon »](#)

Most Stylish

**PETOUCH Premium Dog Door »**

**PROS:**

- ✓ French door design
- ✓ Sliding panel with locking pins
- ✓ Cutting template and detailed assembly instructions included with purchase

**CONS:**

- ✗ No flaps to reduce energy loss
- ✗ Only available in medium and large sizes

[Buy From Amazon](#)

Those looking for a pet door that will enhance their entryway's aesthetic appeal should take a look at the PETOUCH Premium Dog Door. Unlike most other models on the market, this dog door offers a unique two-panel design, almost mimicking the look of French doors. The motion of your dog's head pushing into the two panels will cause the door to open, allowing them to enter or exit the house. This dog door is available in two sizes: medium for pets weighing up to 44 pounds and large for pets weighing up to 100 pounds.

The frame is constructed from heavy-duty aluminum alloy designed to withstand extreme hot and cold weather conditions. Four magnets (two on each swinging panel) help the panels remain locked in place when your pets aren't using the door. Each purchase also comes with a slide-in panel that you can use to prevent your dog from accessing the door, to keep unwanted animals from being able to enter the home, or on excessively rainy, windy, hot, or cold days.

Specs

List Price:	\$169.99 (Medium) to \$299.99 (Large)
Door Type:	Door- or wall-mounted
Lock:	Yes
Flap Size(s):	10.5 in. W x 14 in. H (Medium, both panels) to 13 in. W x 18 1/8 in. H (Large, both panels)

[Buy From Amazon »](#)

The Bottom Line

The BarksBar Large Plastic Dog Door earns our best overall spot. This door can accommodate dogs up to 100 pounds, so it'll suit many pet parents. The flexible vinyl flap allows your pet to enter or leave the home easily while the magnetic closure helps seal the entry to minimize energy loss and unwanted guests. For the times when you want to prevent your dog from letting themselves in or out of the home, you can slide down the self-locking panel. That said, depending on the size of your dog, the climate where you live, and whether or not you're looking for smart features, you may decide that one of the other dog doors reviewed above will be the best fit for you and your pup.

## Things To Consider When Buying Dog Doors

**Door Type:** One of the biggest decisions you'll need to make when shopping is the type of dog door you'd like to purchase. There are four main types to consider:

- **Standard:** This is what most people think of when they hear “dog door.” To install them, a section is cut out of an entry door. The dog door has a frame inserted into the cutout section with one flap (or multiple flaps) that allows the dog to walk in and out of the home. This type is a permanent installation since you're cutting a chunk out of your home's main door. If you ever decide to remove the dog door or [move](#), the main door will need to be replaced.
- **Wall:** As the name implies, wall dog doors are installed into an exterior wall. Like standard dog doors, these models typically have flaps to minimize energy loss while allowing your dog the freedom to enter and leave the home. Some wall doors feature an additional flap to cut back further on energy loss. Since installing a dog door into a wall is complicated, you'll likely need to hire a professional.
- **Sliding:** Sliding dog doors can be placed inside the track of an existing sliding glass door. Since it isn't necessary to make any cuts into the door or a wall, installation is relatively simple. These models can also generally be removed without leaving any damage behind and may be a more suitable option for renters who can't cut into their landlord's property.
- **Bump-Out:** Bump-out dog doors help further reduce the energy loss through the flaps of a dog door. With these models, instead of the dog going directly outside after exiting the house through the door, they enter a small bump-out structure directly adjacent to the home. From there, they can exit to the yard. The bump-out can even be finished to coordinate with your home's exterior if you want a more seamless appearance.

**Size:** The door you choose for your pup must be appropriately sized for their body. You want to ensure they'll have enough space to maneuver through the opening without making it larger than necessary to minimize energy loss and decrease the chances of a person or larger animal using it to gain entry to your home.

Dr. Michael Thompson, veterinarian and founder of Pets Food Safety, shares some pointers for choosing an appropriately sized door: “Measure your pet from the top of the shoulders to the floor to ensure a comfortable and easy passage.” He adds, “The width measurement should be obtained by assessing the broadest part of your dog, often the chest.”

After obtaining these measurements, add between 1 and 3 inches so your dog has space to move comfortably without feeling cramped. If you have a puppy, consider waiting until they’re fully grown to install a dog door, or be sure to factor in their projected adult size to help you make the right choice.

**Materials:** Mark McCalla, the owner of retailer Alpine Dog Co., shares, “A well-designed dog door should withstand various weather conditions and be made of materials that can resist wear and tear from frequent use.” While the overall design of different dog doors tends to be similar, there may be some notable differences in the materials used in each model.

Take note of the frame material, for example. The two materials you’re most likely to see are aluminum and plastic. While doors with a plastic frame are likely more affordable, they tend not to be as durable and could be damaged by chewing or scratching. On the other hand, doors with aluminum frames will require more of an investment, but they’re durable and less likely to get damaged. Sliding door dog doors may be made of different materials, typically vinyl or aluminum. When choosing one of these models, you’ll want to pick a door made from the same material as your sliding glass door to create more of a cohesive look.

Different materials are used to make the flaps on dog doors. The most common options include plastic, vinyl, and K9-Composite (a material similar to that of airplane windshields made specifically for pet doors). Plastic flaps tend to be less expensive, but they’re not as durable as other materials. They can crack when exposed to freezing temperatures or may get broken if a powerful dog runs through them.

Vinyl flaps are usually more durable, particularly those cut from large sheets of vinyl rather than injection-molded vinyl. However, vinyl isn’t always the best choice for areas where temperatures regularly dip below freezing, as the cold can decrease its lifespan.

While K9-Composite flaps are expensive, this material is more durable and longer-lasting. It can hold up well against powerful dogs, and the elements won't cause damage.

**Security:** McCalla emphasizes that "Safety is a common concern with dog doors." You want to avoid making it easier for burglars or other individuals with poor intentions to enter your home. Similarly, you don't want wild animals to be able to enter through the dog door. McCalla continues, "Modern dog doors have evolved to address this, offering features like electronic locks that activate via a collar sensor, ensuring that only your pet has access." There are also dog doors with locking interior panels. These models make it possible to restrict the use of the door to select times and add another layer of security.

If you want more control over who can enter via the dog door, consider looking for doors with a sensor. Some don't require a special collar and can be programmed to open only when they detect your dog's embedded microchip. Just note that these smart doors will involve more of an investment on your part. However, the extra peace of mind may be worth it for some.

**Insulation:** Keeping insulation and energy efficiency in mind is also important when shopping for a dog door. To keep your utility bills down and minimize the loss of warm or cool air from your home, there are a few things you can look for. First, doors with heavier-duty flaps – particularly multiple heavier-duty flaps – will be more energy-efficient. You can also look for models with a magnetic closure to provide a better seal between the flap and the frame when your dog isn't going through the door. Finally, consider a door with some weatherstripping, a soft barrier that works to prevent air leaks and further minimize energy loss.

## How We Chose the Best Dog Doors

The 360 Reviews team at U.S. News & World Report works tirelessly to provide readers with accurate, timely, and relevant information to help them make important purchasing decisions. Beyond the extensive research, editing, and fact-checking conducted by our writers and editors, we consult with experts in the pet care field when compiling our recommendations. For this piece, our contributing writer

interviewed Dr. Michael Thompson, a veterinarian and the founder of [Pets Food Safety](#), and Mark McCalla, the owner of [Alpine Dog Co.](#) We've used their expert input, feedback from professional reviewers and everyday customers, and features such as cost, size, style, smart technology, and security to curate our list of the best dog doors.

WHY SHOULD YOU TRUST US?

The author of this piece [Deirdre Mundorf](#) has more than five years of experience as a freelance writer. Much of her work has focused on reviewing and recommending products to readers including the best in [air purifiers for pets](#) and [carpet cleaners](#) for U.S. News 360 Reviews. Deirdre has three dogs, so she understands the need to balance convenience and safety when choosing a new dog door. Her work has been featured in several other online publications, including USA Today, Bob Vila, and House Digest.

FAQ

- How do you install a dog door?

+
- Are dog doors safe?

+
- How do I measure my dog to ensure the right fit for a dog door?

+

About Our Team

Deirdre Mundorf

Contributor





Mundorf is a freelance writer who specializes in home goods, family, and pet content. She has more than three years of experience as a professional writer and her work has been featured in [Bob Vila](#), [Discover Magazine](#), and [House Digest](#). Prior to her freelancing career, Mundorf was an elementary school teacher for more than a decade.

[Read more](#)



## Marlo Jappen Porto

Former Editor



Marlo Jappen Porto is a former editor for U.S. News 360 Reviews, focusing on home goods. Prior to joining the team, she was a researcher at NBCUniversal, where she gathered compelling and relevant archival content for live broadcasts. In addition, she has spent years working as an editor and community journalist.

[Read more](#)



## Kayla Randolph

Editor



Kayla Randolph is an editor specializing in pets for the 360 Reviews Home Goods team. In addition to work with USN&WR, she's a freelance editor with a bachelor's in Writing, Literature, and Publishing and a master's in Publishing and Writing from Emerson College.

[Read more](#)

---

*U.S. News 360 Reviews takes an unbiased approach to our recommendations. When you use our links to buy products, we may earn a commission but that in no way affects our editorial independence.*



HOME

HOME SERVICES

SLEEP

TECHNOLOGY

LIFESTYLE

INSURANCE

BUSINESS

360 REVIEWS UK



[About](#) [Editorial Guidelines](#) [Contact](#) [Press](#) [Advertise](#) [Newsletters](#) [Jobs](#) [Site Map](#)  
[Store](#)

Copyright 2024 © U.S. News & World Report L.P.

[Terms & Conditions/Privacy Policy/U.S. State Privacy Notice/Your Privacy Choices](#) 