



360 REVIEWS



Sign In

When you use links on our website, we may earn a fee.

Home / 360 Reviews / Home Goods

5 Best Washing Machines of 2024

By [Deirdre Mundorf](#)



Reviewed by [David Dritsas](#) and [Marlo Jappen Porto](#)

Updated: April 25, 2024



Save

The best washing machines offer all of the cycles and features you're looking for to effectively clean clothing, linens, and other items. However, with so many different models on the market – including stackable options, front-loaders, top-loaders, washers with impellers, and those with agitators – the decision about which one to purchase isn't always easy.

Below, we'll share some of the best washers currently on the market, including our best overall, the GE GFW850SPNRS 5.0-Cubic-Foot Smart Front Load Steam Washer, which we chose for its large capacity and robust feature set. We'll also dive into some of the most important things to consider and share some expert tips to help you decide which model will best meet your specific laundry needs.

Table of Contents

[Best Washing Machines](#)

[Things To Consider When Buying](#)

[Maintenance and Upkeep](#)

[More +](#)

Our Top Picks

Best Overall: [GE GFW850SPNRS 5.0-Cubic-Foot Smart Front Load Steam Washer »](#)

[Jump to Review ↓](#)

Best Budget: [GE GTW465ASNWW 4.5-Cubic-Foot Washer »](#)

[Jump to Review ↓](#)

Best for Large Families: [LG WM9500HKA 5.8-Cubic-Foot Smart Front Load Washer »](#)

[Jump to Review ↓](#)

Best for Small Spaces: [Whirlpool WTW2000HW 1.6-Cubic-Foot Compact Top Load Washer »](#)

[Jump to Review ↓](#)

Best for Energy Efficiency: [Samsung WF45B6300AW 4.5-Cubic-Foot Smart Front Load Washer »](#)

[Jump to Review ↓](#)

Best Overall

GE GFW850SPNRS 5.0-Cubic-Foot Smart Front ...



PROS:

✓ UltraFresh Vent System

CONS:

✗ Relatively expensive

with OdorBlock to minimize odors

- ✓ Large capacity
- ✓ Automatic detergent dispensing capabilities

✗ Not as energy-efficient as many other models on our list

[Buy From Best Buy](#)

The GE GFW850SPNRS is a front-load washing machine that offers a generous 5.0-cubic-foot capacity, allowing it to tackle large loads of laundry for families or individuals looking to reduce the number of wash cycles they complete. This model has various features that prevent the buildup of moisture and odor, which can be a problem with other front-load washing machines. The integration of Microban technology in the draining system, gasket, and dispenser helps prevent bacteria from building up, while the UltraFresh Vent System with OdorBlock prevents excess moisture from becoming an issue by rotating the basket at set intervals introducing more fresh air into the unit between loads.

With the [built-in Wi-Fi](#), you can keep track of the progress of each load of laundry. You'll receive alerts through the integrated app when a wash cycle is complete and the clothing or linens are ready to be moved to the dryer. The app also makes it possible for you to remotely start or stop a load. To further automate the process of washing laundry, the GE GFW850SPNRS also uses SmartDispense Technology. Simply pre-load the dispenser with your detergent of choice, and it'll automatically dispense the proper amount into each load. The dispenser can hold enough detergent for up to 32 loads of laundry, and the washer will send notifications through the app to let you know when it needs to be refilled.

Specs:

Price:

\$1,349

Dimensions:

28 inches W x 34 inches D x 36 3/4 inches H

Drum Capacity:	5.0 cubic feet
Number of Cycles:	12

[EXPAND LIST](#) ▾

[Buy From Best Buy](#) »

Best Budget

GE GTW465ASNWW 4.5-Cubic-Foot Washer »



PROS:

- ✓ Inexpensive
- ✓ Features 14 different wash cycles
- ✓ Auto Soak options for enhanced stain removal

CONS:

- ✗ No steam cycle
- ✗ Not Wi-Fi-compatible

[Buy From Best Buy](#)

The \$799 retail price of the GE GTW465ASNWW top-load washing machine makes it the most budget-friendly pick on our list. However, despite the lower price tag, you'll find that this model still has a lot of user-friendly features to offer. First, while its 4.5-cubic-foot capacity isn't as large as some of the models on our list, it's still considered a large-capacity model and should offer ample space to fit most loads of laundry and even king-size bedding. The GTW465ASNWW uses a dual-action agitator to move clothes through the washer and remove soil and stains.

This model has 14 different wash cycles, allowing users to customize the settings based on the types of fabrics they're washing and the demands of each load. Choose from options such as Active Wear, Towels & Sheets, Jeans, Delicates, and Casuals. You can also customize the water level based on the load size, or choose the Deep Fill setting to fill the tub with water for more effective stain removal. If you're in a rush, try the Speed Wash setting for lightly soiled loads so that you can move them to the dryer more quickly.

Specs:

Price:	\$799
Dimensions:	27 inches W x 27 inches D x 44 inches H
Drum Capacity:	4.5 cubic feet
Number of Cycles:	14

EXPAND LIST ▾

[Buy From Best Buy »](#)

Best for Large Families

LG WM9500HKA 5.8-Cubic-Foot Smart Front Lo...

**PROS:**

- ✓ Large capacity
- ✓ Offers Wi-Fi connectivity
- ✓ Utilizes six wash motions to clean clothing

CONS:

- ✗ Expensive
- ✗ Takes up a lot of space

[Buy From LG](#)

With its 5.8-cubic-foot megacapacity, the LG WM9500HKA is our top choice for large families. This front-load washer is Wi-Fi-enabled to keep the laundry process streamlined and help busy households take care of everything else that they need to do. With the SmartThinQ app, users can monitor each cycle, receive alerts that a load is ready to move to the dryer, and more. Families that are looking to get even more laundry done at the same time may want to consider purchasing the [LG SideKick Pedestal Washer](#). Enabling the TWINWash system, you can complete two loads of laundry at the same time with the pedestal and the washer.

The LG WM9500HKA offers TurboWash technology utilizing high-pressure nozzles. Thanks to the higher pressure delivered by these nozzles, fabrics are cleaned more effectively, potentially saving up to 30 minutes on each

load. The washer also features integrated steam technology to lift soils and odors from clothing and help control wrinkles. Additionally, the unit includes an integrated detergent tray. Load your detergent, bleach, and fabric softener, and they'll automatically be dispensed at the ideal time during each cycle.

Specs:

Price:

\$1,998.99

Dimensions:

29 5/8 inches W x 33 1/16 inches D x 41 3/16 inches H

Drum Capacity:

5.8 cubic feet

Number of Cycles:

14

[EXPAND LIST](#) ▾

[Buy From LG](#) »

Best for Small Spaces

Whirlpool WTW2000HW 1.6-Cubic-Foot Comp...

**PROS:**

- ✓ Portable design with flexible installation options
- ✓ Stainless steel drum
- ✓ Impeller for gentle cleaning

CONS:

- ✗ Small capacity
- ✗ Only five wash cycles

[Buy From Whirlpool](#)

If you have a small laundry room or are looking for a portable option, consider the Whirlpool WTW2000HW 1.6-Cubic-Foot Compact Top Load Washer. This model can be permanently hooked up with plumbing like with traditional models or, if preferred, it can alternatively be stored out of the way and rolled out when laundry needs to be cleaned. Simply connect the hose to a sink and plug the unit into an outlet. It requires just a standard 120 Volt, or 120V, connection, making it possible to do laundry in more spaces.

The washer has an impeller and stainless steel tub to effectively clean soiled clothing and linens. Choose from five different cycles and five temperature settings to ensure each load is cleaned properly. With the EasyView Glass

Lid, you can even watch the machine do its work and monitor the progress of each cycle.

Specs:

Price: \$944

Dimensions: 21 inches W x 23 inches D x 37 inches H

Drum Capacity: 1.6 cubic feet

Number of Cycles: 6

EXPAND LIST ▾

[Buy From Whirlpool »](#)

Best for Energy Efficiency

Samsung WF45B6300AW 4.5-Cubic-Foot Smar...



PROS:

- ✓ Estimated yearly energy cost of just \$13
- ✓ Wi-Fi connectivity for scheduling and monitoring cycles
- ✓ Fast 28-minute wash cycle option

CONS:

- ✗ Smaller capacity than some other models on our list
- ✗ Relatively large footprint

[Buy From Samsung](#)

The Samsung WF45B6300AW 4.5-Cubic-Foot Smart Front Load Washer is an Energy Star “Most Efficient” recognized model for this year. The unit has an estimated yearly electricity usage of just 93 kilowatt-hours, which works out to an estimated \$13 per year (or \$11 per year when paired with a natural gas water heater). The Super Speed cycle allows users to minimize the energy use of the machine by completing a full load of laundry in just 28 minutes.

This is a Wi-Fi-compatible smart washer. With the SmartThings App from Samsung, you’ll receive notifications about each load and can even schedule cycles or start/stop them from anywhere. The front-load washer is stackable with the compatible 7.5-Cubic-Foot Smart Electric or Gas Dryer to conserve space. The washer and dryer offer a closet-depth fit, further minimizing the amount of space they’ll consume in your laundry room. Samsung integrated Vibration Reduction Technology+ into the design to keep vibrations at a minimum to reduce the volume of each wash cycle and prevent it from disrupting anyone in the home.

Specs:

Price:	\$1,049
Dimensions:	29.4 inches W x 34.1 inches D x 42.4 inches H
Drum Capacity:	4.5 cubic feet

**Number of
Cycles:**

12

[EXPAND LIST](#) ▼[Buy From Samsung »](#)

The Bottom Line

There are several high-quality washing machines out there. We chose the GE GFW850SPNRS 5.0-Cubic-Foot Smart Front Load Steam Washer as our top pick because of its generous capacity, smart capabilities, and multiple cycle options, among other features. However, depending on your household size, laundry habits, and specific cleaning needs, you may decide that one of the other models on our list is a better fit for you. Always keep your specific needs and preferences at the forefront and use them to help guide you as you search for a new washing machine.

Things To Consider When Buying Washing Machines

Size and Stackability: Before purchasing a new washing machine, you'll want to consider the available space in your [laundry room](#) to make sure that what you choose will fit as desired. Start by measuring the depth and width of the space where you plan to put your new appliance. If there are any shelves or cabinets above where you want to put the washer, don't forget to measure the height of the opening as well. Once you have these measurements, you'll be able to narrow down your options and eliminate models that are too big for the space.

If you want to conserve space in your laundry room, you might want to consider a stackable washing machine. These models are designed so that a dryer can be stacked on top of them. (You'll need to purchase a compatible dryer along with a

stacking kit.) The benefit of choosing a stackable washer and dryer is that the two appliances will take up the same amount of floor space as a single unit.

Front-Load vs. Top-Load: Muhammad Waqar, founder and CEO of [Build Pakistan](#), a construction and home maintenance marketplace, explains that “The choice between [front-load](#) and [top-load](#) washers depends on your preferences.” Each model type has its pros and cons, so you’ll want to consider your washing needs, laundry habits, and more to help you decide which is right for you. As their name suggests, you load garments and linens into a top-load washer through a door on the top panel. Waqar shares that “Top-load washers are more budget-friendly and convenient for loading, especially if you have mobility issues.” These models may feature either an impeller or a central agitator. While agitators used to be the norm in top load washers, many newer models use an impeller. Though both devices help clean clothing, agitators may be better at removing deeper stains, while impellers offer a gentler cleaning motion and require less water.

Front-load washers feature a door that opens from the front panel. They clean clothing and linens with their rotating drums. Waqar points out a few of the benefits of these models: “Front-load washers are energy-efficient, provide better cleaning performance, and stackable for space-saving.” However, the door of the machine locks as soon as the washer starts, so you won’t be able to add a stray piece of clothing midcycle as you could with a top-loader. While front-load washing machines use less water, their wash cycles are typically longer than those of a top-load model.

Capacity: Karina Toner, operations manager of a home cleaning service in Washington D.C. called [Spekless](#), says that capacity is one of the most important features to consider when shopping for a new washing machine. She shares that you should “Determine the right capacity for your household's needs. Larger families may require a washer with a larger drum, while smaller households can opt for a more compact model.”

The capacity of a washing machine is measured in cubic feet. Smaller washing machines may only have a capacity of about 2.5 or 3 cubic feet, while larger models maybe 5 or more cubic feet. Since larger-capacity models accommodate larger loads of laundry, they’re a good match for those who want to be able to clean their bulky comforters at home. Regardless of the capacity of the washer you choose, take care not to overfill it. Doing so may decrease its effectiveness and cause it to require replacement sooner than would have otherwise been necessary.

Drum Material: Washing machine drums are either made from plastic, porcelain-coated steel, or stainless steel. Understanding the differences between these three options can help you decide which one is best for your needs. Washing machines with plastic drums are likely to be available at a more budget-friendly price. However, plastic isn't as durable as other materials and over time may warp or stain. Odors can also get trapped in the material, potentially transferring to the garments you're cleaning. What's more, if the plastic material wears down or starts to crack, it can lead to sharp sections that can snag clothing as it moves through the tub.

A porcelain-coated steel tub will better resist heat than plastic. However, the porcelain coating is likely to start chipping at some point when metal buttons or zippers scrape against it during a wash cycle. Over time, if these scratches become too deep and too much of the steel is exposed, rust can form. When you wash a load of laundry, the rust may rub off onto your items.

Stainless steel washing machine drums are seen as the most durable option. They're the most resistant against scratching and chipping, and stainless steel doesn't rust like other metals can. Unfortunately, however, because of their greater performance and durability, washing machines with stainless steel drums are typically the most expensive.

Cycle Options: "Look for machines with versatile cycle options to handle different fabric types and stains effectively," says Waqar of Build Pakistan. Several cycles come standard with most models, such as normal, heavy duty, delicate, whites, and permanent press. However, some models will offer additional cycles that may be a good fit for your laundry needs. Some you might want to be on the lookout for include:

- **Quick Wash:** These cycles are designed to save energy and quickly wash a load of laundry. If you're in a rush to get something clean and don't have any heavily soiled items in the load, a quick wash setting may be a suitable fit.
- **Sanitize:** Toner of Spekless shares that a sanitizing setting, which kills bacteria and allergens, is important for households with allergies. This cycle can vary in duration but is often longer than a regular cycle to ensure proper sanitization and often uses hot water to effectively eliminate germs and allergens.
- **Steam:** As the name suggests, steam cycles harness the power of steam to lift stains and reduce wrinkles. Toner notes that "They're ideal for refreshing and

softening clothes without a full wash. Steam cycles can be shorter, usually lasting around 30 to 45 minutes. They also often offer options for various water temperatures to suit different fabrics.”

- **Self-Clean:** A self-clean cycle can simplify the task of cleaning the washing machine. These cycles are designed to be run without any clothing or garments in the drum and use hot water, special motions, and bleach or washing machine cleaner to remove buildup inside the drum.

Features: Beyond the integrated wash cycles, there are several other features that manufacturers add to some washers to improve the user experience. One of these is smart connectivity. Washers with Wi-Fi and smart features can pair with your cell phone, making it possible for you to monitor each load of laundry, check on its progress, or even create schedules. With a smart washer, you can also receive an alert when a load is finished, helping you stay on top of switching items to the dryer promptly so they’re not forgotten about.

A bulk detergent dispenser is another useful feature that you might want to look for when shopping for a washing machine. With these dispensers, you can pour in enough detergent, fabric softener, and other wash additives to last for several loads of laundry. You won’t need to measure these out each time, and the washer will automatically dispense the ideal amount based on the amount of laundry it’s holding.

Noise Level: Some washing machines are noisier than others. If your washer is in the basement or farther away from sleeping and living areas in your home, its noise level is probably of less concern to you. However, if it’s near these spaces in the house, then you might want to pay more attention to how loud or quiet each model you’re considering is. The noise level of a washing machine is measured in decibels (dB). Models less than 40 to 50 dB are considered quiet. These would produce a similar amount of sound as quiet conversation. Conversely, any machine with a noise level of more than 75 dB will be very loud – about the same noise level as a vacuum cleaner.

Of course, even within the same model, the noise output can vary between different cycles and spin settings. As you compare different options, you might notice that some manufacturers integrate features to keep the machine balanced and reduce vibrations that cause more noise. Models with a brushless motor and better

insulation should generally operate more quietly than washers that don't have these features.

Energy Efficiency: Energy-efficient washers are designed to use less electricity and water than their counterparts. Washers that are Energy-Star certified, for example, consume approximately 20% less energy and 30% less water than standard models.

These [savings on your utility bills](#) can add up over time. Plus, with energy-efficient models, you'll be helping to conserve resources and minimize your environmental footprint.

Energy Star-certified front-load washers are going to offer the greatest savings. They're about 25% more efficient than top-load impeller washers. Compared to top-load agitator washers, Energy Star certified front-load washers perform even better. They require approximately 45% less energy and 50% less water to operate than these models.

Available Finishes: Gone are the days when white was just about the only finish option for a new washing machine. Today, you can choose from a variety of finishes depending on your style, budget, and other preferences. White washers are likely to be a cheaper option than stainless steel or colored models. However, there are other considerations to keep in mind.

Stainless steel washing machines are generally seen as more stylish and can give your laundry room a higher-end feel. However, these washers can show fingerprints and smudges more easily, so you may want to look for a fingerprint-resistant model. While less likely to show fingerprints, white appliances will show dirt more easily. There is no one "right" choice when it comes to which finish is best. Use your budget and the overall look you're going for in your laundry room to guide your decision. If you're only purchasing a new washing machine and not a new dryer, that can also make your decision easier, as you'll likely want the two models to coordinate with one another.

Warranty: Verify the length and terms of the warranty offered by each manufacturer before making a purchase. In most cases, washing machines come with a one-year limited warranty that covers defective parts or labor, but some models may come with shorter or longer coverage. Additionally, it may also be possible to add on an extended protection plan, either through the manufacturer, the retailer you purchase

the appliance from, or a home warranty company. The price of these plans can also vary, so it's a good idea to do your research.

Maintenance and Upkeep

Avoid untimely repairs and keep your washer by following these general maintenance tips and best practices. None of them are terribly difficult but can have a big impact on keeping your washer running at optimal performance.

Do Not Overload: Overloading your washing machine is one of the worst things you can do. This can cause the machine to unbalance and possibly cause damage. If the items you place into the wash don't move around freely or easily, this is a good sign that you've overloaded the washer tub. Large blankets and comforters are notorious for overloading, so you may want to take these to a local laundromat that offers large-capacity washers and dryers.

Use the Correct Detergent: If you have a high-efficiency (HE) washer make sure your laundry detergent carries the HE label on the bottle. If you don't use this type, you'll create too many suds that the machine must wash away with extra rinse cycles. Because many modern washers use sensors to detect suds, you may not notice it doing the extra work. Also, do not overuse laundry liquid, as this may cause too many suds, as well. Look for the lines on the laundry bottle cap – do not fill the entire cap.

Clean the Lint Filter: Yes, washers can have lint filters, too. These do not need to be emptied nearly as often as the ones you have in your dryer, but it's a good idea to check them every few months for debris, such as lint, coins, or shirt collar inserts. These filters are located in different locations for different models of washers and will likely require a few steps to access, so consult your manufacturer's instructions on how to do it properly.

Regular Cleaning: Front-loading washers can sometimes retain bits of water that can lead to mildew or unpleasant odors. An easy way to combat this is to simply leave the door open for a few hours after a load is complete to let the washer air out. But if you can't do that because of mischievous children or pets, you can also wipe out the gasket or rubber seal that lines the opening to remove water and dirt. It's also a good idea to clean your washer's gasket every few months with a simple cleaner such as

vinegar, baking soda, or mildew cleaner. Some washers also feature a sanitizing cycle that you can run with the aid of a cleaner like bleach.

How We Chose the Best Washing Machines

We performed extensive research; consulted with experts in the industry including Karina Toner, operations manager of home cleaning service [Spekless](#) based in Washington, D.C., and Muhammad Waqar, founder and CEO of [Build Pakistan](#), a construction and home improvements marketplace; and compared ratings and feedback from both everyday users and professional reviewers to compile this list of the best washing machines. To make sure we were able to offer suitable selections for a range of users, we also took the price of each model into account, as well as considering factors such as household size and energy efficiency.

WHY SHOULD YOU TRUST US?

Readers see U.S. News & World Report as a trusted source for reliable information and reviews. Each review we post goes through a thorough process including extensive research, fact-checking, and editing to ensure that only the most accurate and up-to-date information is shared with our audience. [Deirdre Mundorf](#), the writer of this piece, has been reviewing and writing about home-related products for nearly five years. Her byline has also been published on sites such as Bob Vila, House Digest, and Discover Magazine.

FAQ

- When is the best time to buy a new washing machine?**

+
- How long do washing machines last?**

+
- How do I clean my washing machine?**

+

Are washer-dryer combos worth it?



About Our Team



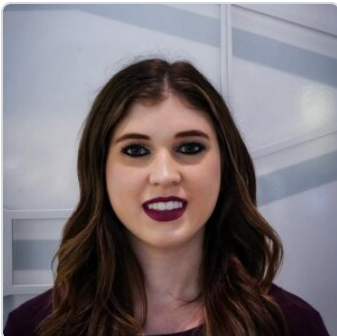
Deirdre Mundorf

Contributor



Mundorf is a freelance writer who specializes in home goods, family, and pet content. She has more than three years of experience as a professional writer and her work has been featured in [Bob Vila](#), [Discover Magazine](#), and [House Digest](#). Prior to her freelancing career, Mundorf was an elementary school teacher for more than a decade.

[Read more](#)



Marlo Jappen Porto

Former Editor



Marlo Jappen Porto is a former editor for U.S. News 360 Reviews, focusing on home goods. Prior to joining the team, she was a researcher at NBCUniversal, where she gathered compelling and relevant archival content for live broadcasts. In addition, she has spent years working as an editor and community journalist.

[Read more](#)

David Dritsas

Editor, Home Goods



David Dritsas is an Editor with the Home Goods team for U.S. News 360 Reviews, focusing on DIY, tools, outdoor home improvement, and more. He has covered consumer technology, home goods, and retail industries for more than 20 years for trade and consumer news outlets. He is an expert in navigating the online retail space.

[Read more](#)

U.S. News 360 Reviews takes an unbiased approach to our recommendations. When you use our links to buy products, we may earn a commission but that in no way affects our editorial independence.

HOME

HOME SERVICES

SLEEP

TECHNOLOGY

LIFESTYLE

INSURANCE

BUSINESS

360 REVIEWS UK



[About](#) [Editorial Guidelines](#) [Contact](#) [Press](#) [Advertise](#) [Newsletters](#) [Jobs](#) [Site Map](#)
[Store](#)

Copyright 2024 © U.S. News & World Report L.P.

[Terms & Conditions/Privacy Policy/U.S. State Privacy Notice/Your Privacy Choices](#) 